



Hello Students and Parents,

Due to COVID-19 social distancing protocols, we have changed the process for our annual Music Assessments so that the assessment can be submitted online for adjudicating. Read on below for more information about the program and the process to submit.

Music Assessments – General Information

We have been conducting these exams for over 15 years and find that it is very beneficial for both students and teachers. The NFSM Music Assessments is our in-house music proficiency performance exam which is designed to help students mark progress, set goals, and receive constructive feedback to help their growth as developing musicians. It also allows a 3rd party to give valuable feedback to the students' instructors so that they can pinpoint problem areas that may have gone overlooked with the week-to-week lessons.

Music Assessment Preparation and Awards

Teachers help students select the two pieces they are to perform in front of a judge and work on these pieces during lessons. Pieces must be memorized and students must submit the music score (or lyric sheet for vocalists, preferred with chords marked) to the judge for review as they perform. The performances are in one-on-one settings. Students scoring an Excellent Rating (80-89) receive a Medal of Excellence while students scoring a Superior Rating (90-100) are awarded a Superior Trophy. Every third consecutive superior score receives a 3rd Year Superior Trophy (this trophy is awarded for consecutive superiors every 3rd, 6th, and 9th years, and resets if a student does not earn Superior rating or skips a year). There is a \$15 fee per student (\$10 for additional siblings on same account) which is a pass through payment to cover judge fees.

SUBMISSION PERIOD: May 23rd – May 31st

Please note if you have not picked up your trophy from last year's assessments, please contact the office to schedule a time to pick up.

Checklist for Submission:

Music Sheet for Piece 1

Video File for Piece 1

Music Sheet for Piece 2

Video File For Piece 2

Input Information in Message Field of Submission:

Student Name, Teacher Name, Level,

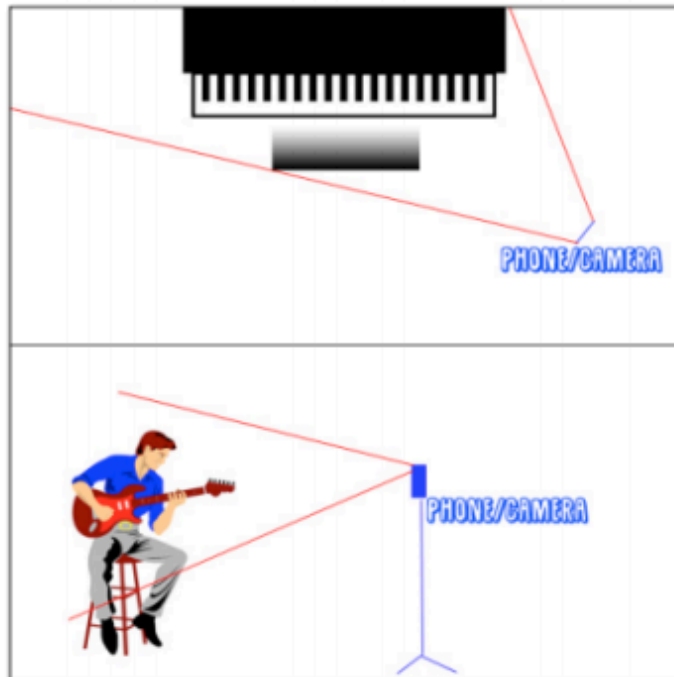
Piece 1 Title-Composer-Instrument, Piece 2 Title-Composer-Instrument

Using WeTransfer.com send to nfsmassessments@gmail.com

Submission Process

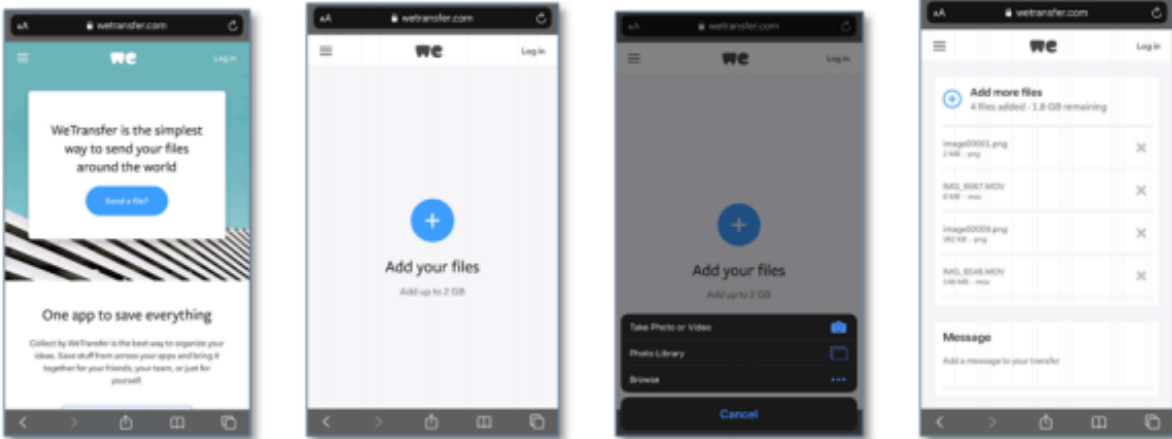
We will be accepting Video submissions through a website called wetransfer.com. You do not have to create an account and it is a free service, however you will need to enter an email to verify the transfer with a PIN they will send. You are to upload both score sheets, both videos, and include the student's information in the memo field. Below is a step-by-step guide with screenshots from a mobile device. The entire transfer process should take about 10-minutes or less to complete.

1. Talk to your teacher to know which **two** pieces the student is working on and get a copy of the music score (can be from music book). Most of these pieces were selected in February or early March, but we will allow students/teachers to change these on the fly (during submission) so you are not obligated to do the piece you initially submitted – unless you'd like to.
2. **Record two videos, one for each piece.** Vocalists and instrumentalists should have the camera facing directly at them. Pianists will need to either prop or have a family member hold the camera from a side angle, so that the judge can see their hands on the keys, posture, and feet if using foot pedals. **We recommend using front facing camera on phones/tablets as they have better quality video.**
 - a. For vocalists, you will be singing to your track. You can play the track from another device, CD player, YouTube, etc. The track must be instrumental – no lyrics (chorus/hooks are okay).
 - b. For instrumentalists, a track is not required but some of you have practiced with a backing track and may use as necessary – see your instructor for clarification.
 - c. The student should not be using their books during their performance, as the music must be memorized. Violations will need to submit a new video or will be disqualified.



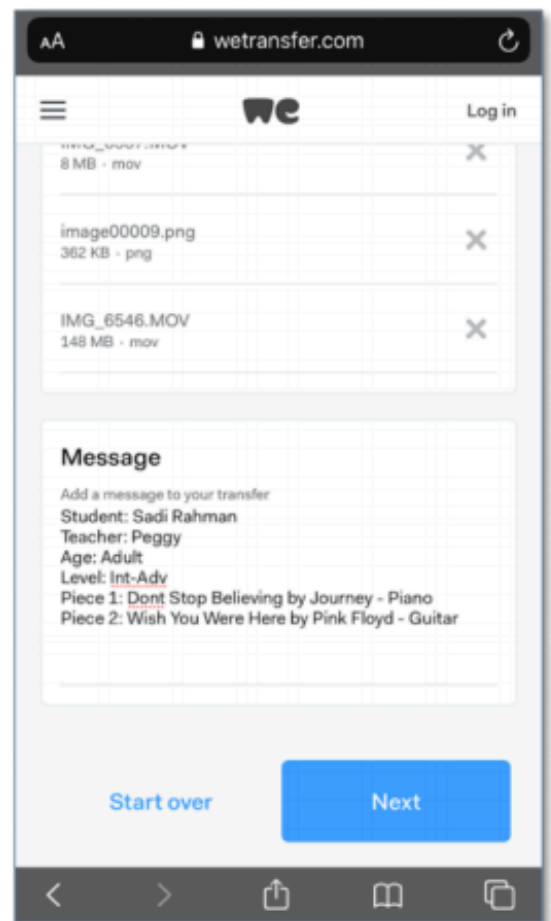
3. Once you are ready to submit, you can follow these instructions (make sure to watch your videos first to make sure it's ready and clearly audible).
 - i. Go to wetransfer.com and click the blue "Send a File" button.

- ii. Click “add your files” and, one by one from your photo library, add the following:
1. Music sheet for piece 1 (can be a picture taken with your phone, as long as it is legible; scans also accepted)
 2. Video for piece 1
 3. Music sheet for piece 2
 4. Video for Piece 2



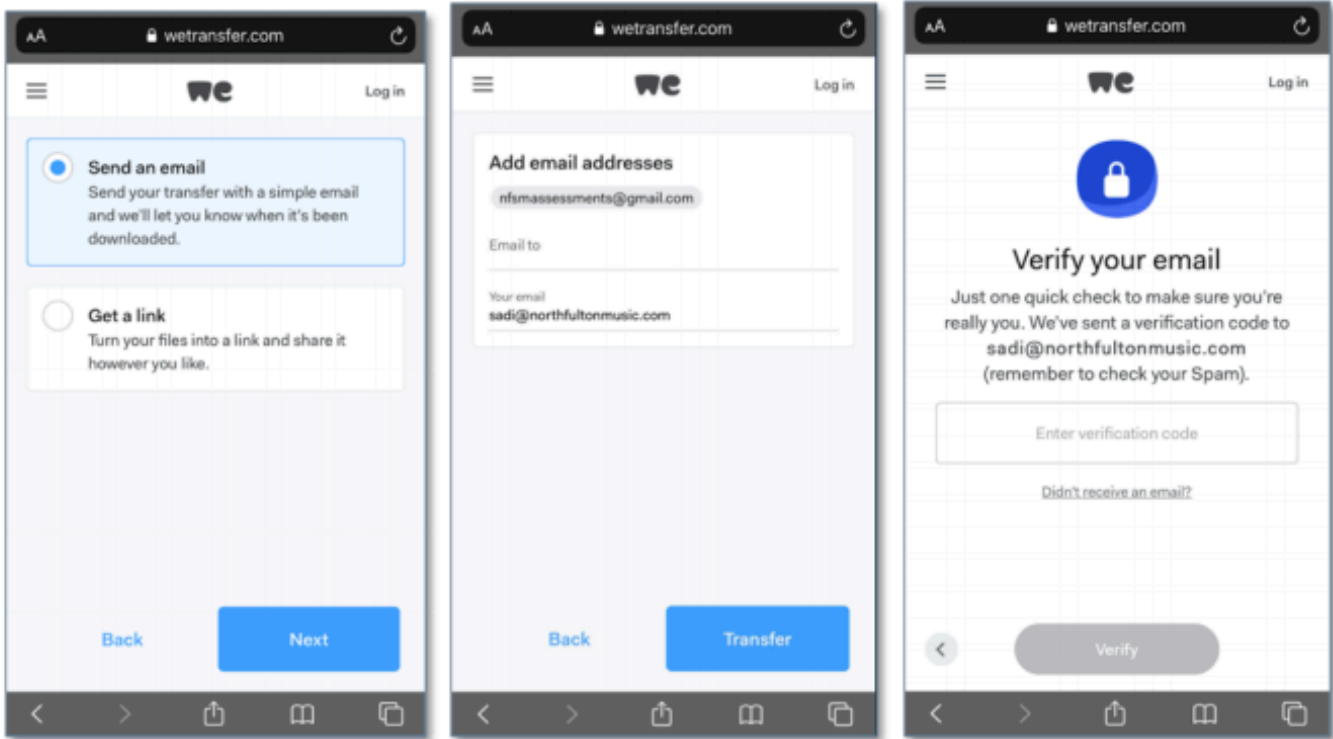
- iii. Input the following information in the **message** field:

1. **Student Name** (First and Last Name)
2. **Teacher Name** (first name ok)
3. **Age**
4. **Level:** Pre-Beg, Beg, Beg-Int, Int, Int-Adv, or Adv (ask your teacher)
5. **Piece 1:** Title, Composer, and Instrument
6. **Piece 2:** Title, Composer, and Instrument

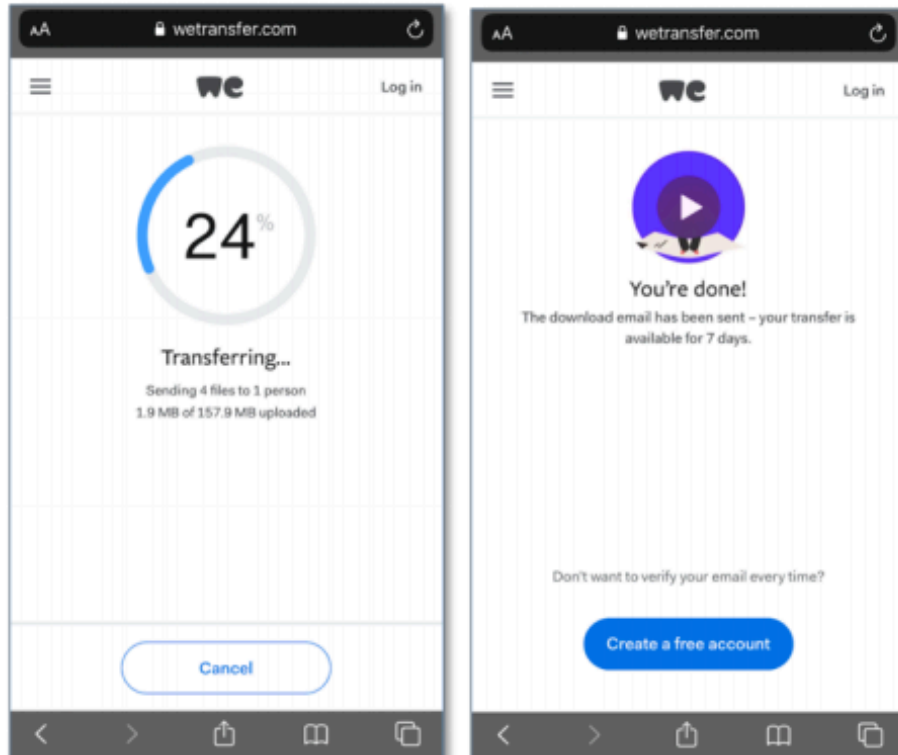




- iv. Click Next. Check the “Send an Email” box and click Next. Email To: nfsmassessments@gmail.com. Enter your Email for verifying transfer with the pin code they will email you



- v. Allow a few minutes to upload; depending on the size of the video, this may take a few minutes. If uploading from your phone, make sure the screen doesn't time out.



That's it you're done! Contact the office at info@northfultonmusic.com if you need additional help.